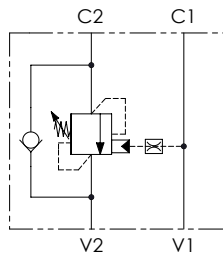


SCHEMA IDRAULICO / HYDRAULIC CIRCUIT

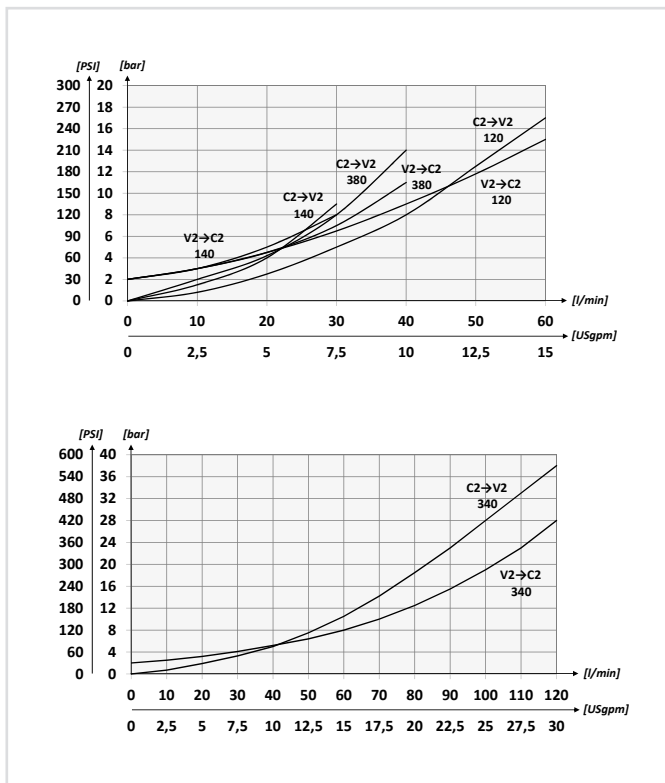


CODICE ORDINAZIONE / ORDERING CODE

	01	02	03	04	05
VBCL					

01	VALVOLE DI BILANCIAMENTO SINGOLE PER CENTRO APERTO (SINGLE COUNTERBALANCE VALVES FOR OPEN CENTER)				VBCL			
02	DIMENSIONE (SIZE)	BSPP 1/4			140			
		BSPP 3/8			380			
		BSPP 1/2			120			
		BSPP 3/4			340			
03	MOLLA (SPRING) 30/210 bar (435/3045 PSI)	Rp 1:4.25	140	78 bar/al giro (1131 PSI/turn)	Taratura standard (Std. setting) Q=5 l/min 200 bar (2900 PSI)	1		
		Rp 1:8.75	120	160 bar/al giro (2320 PSI/turn)				
	MOLLA (SPRING) 60/350 bar (870/5075 PSI)	Rp 1:4.25	140	135 bar/al giro (1958 PSI/turn)	Taratura standard (Std. setting) Q=5 l/min 350 bar (5075 PSI)		2	
		Rp 1:8.75	120	160 bar/al giro (2320 PSI/turn)				
	MOLLA (SPRING) 60/350 bar (870/5075 PSI)	Rp 1:6.2	340	143 bar/al giro (2074 PSI/turn)	Taratura standard (Std. setting) Q=5 l/min 350 bar (5075 PSI)			11
		Rp 1:10.6		242 bar/al giro (3509 PSI/turn)				
04	MATERIALE (MATERIAL)	Acciaio + zincatura (Steel body + zinc-plating)			S			
		Acciaio + zinco-nichel (Steel body + zinc-nickel)			K			
05	RAPPORTO DI PILOTAGGIO (PILOT RATIO)	140	1:4.25 Standard		/			
		380	1:8.75		8			
		120	1:6.2		/			
		340	1:10.6		11			

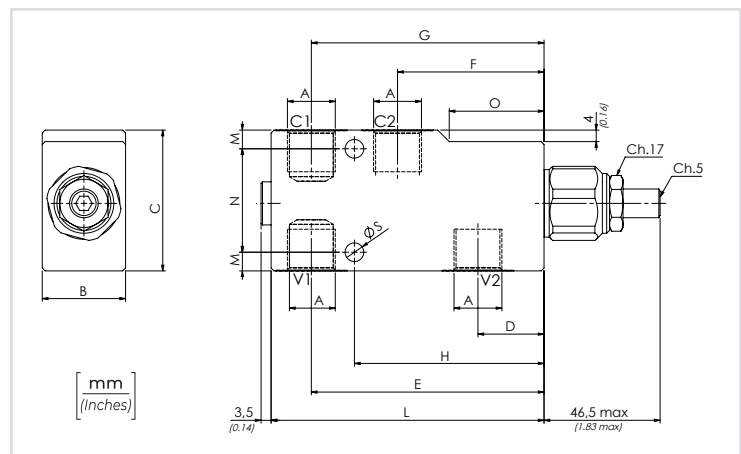
PERFORMANCES



Opzione: Tappo piombatura - Optional: Tamper proof cap **81300095**

DATI TECNICI / TECHNICAL DATA

Olio idraulico - Mineral oil	ISO 6743/4 (DIN 51524)
Viscosità olio - Oil viscosity	15-250 mm²/s (15 to 250 cSt)
Classe di contaminazione max Max contamination index	ISO 4406:1999 Classe 19/17/14
Temperatura dell'olio - Oil temperature	-20°C +80°C -4°F +176°F
Temperatura ambiente - Environment temperature	-20°C +50°C -4°F +122°F
È indispensabile l'utilizzo di un filtro per proteggere la valvola (filtrazione consigliata 15 µm) It is necessary a filter use to protect the valve (advised filtration 15 µm)	



CARATTERISTICHE TECNICHE / TECHNICAL CHARACTERISTICS

TIPO TYPE	A	PORTATA MAX MAX FLOW l/min-USgpm	PRESSIONE MAX MAX PRESSURE bar-PSI	B	C	D	E	F	G	H	L	M	N	O	S	PESO APPROX (kg) APPROX WEIGHT (lb)				
VBCL140	BSPP 1/4	30 (7.9)	350 (5075)	29 (1.14)	49 (1.93)	23 (0.91)	81 (3.19)	51 (2.01)	81 (3.19)	66 (2.60)	95 (3.74)	6,5 (0.26)	36 (1.42)	33 (1.30)	6,5 (0.26)	0,98 (2.16)				
VBCL380	BSPP 3/8	40 (10.6)			59 (2.32)	21 (0.83)	84 (3.30)		84 (3.31)	67,5 (2.66)	100 (3.94)	9,5 (0.37)	40 (1.57)			0,92 (2.02)				
VBCL120	BSPP 1/2	60 (15.9)			39 (1.54)	69 (2.72)	20 (0.79)		120 (4.72)	72 (2.83)	120 (4.72)	96 (3.78)	140 (5.51)			9,5 (0.37)	50 (1.97)	45 (1.77)	10,5 (0.41)	1,09 (2.40)
VBCL340	BSPP 3/4	120 (31.7)			39 (1.54)	69 (2.72)	20 (0.79)		120 (4.72)	72 (2.83)	120 (4.72)	96 (3.78)	140 (5.51)			9,5 (0.37)	50 (1.97)	45 (1.77)	10,5 (0.41)	2,54 (5.59)