

General Description

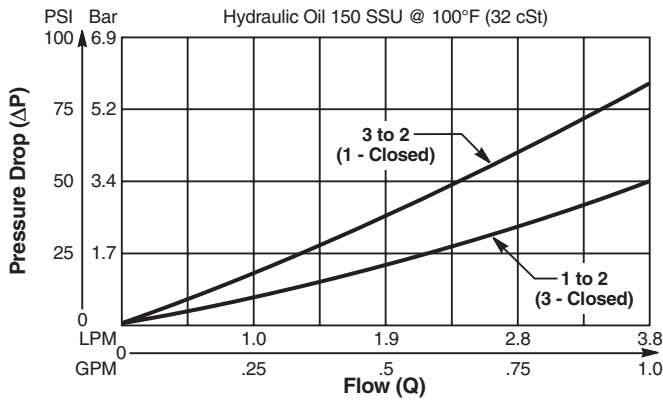
Cartridge Style Shuttle Valve. [For additional information see Technical Tips on pages CS1-CS4.](#)

Features

- Hardened, precision ground parts for durability
- Rapid response to load direction changes

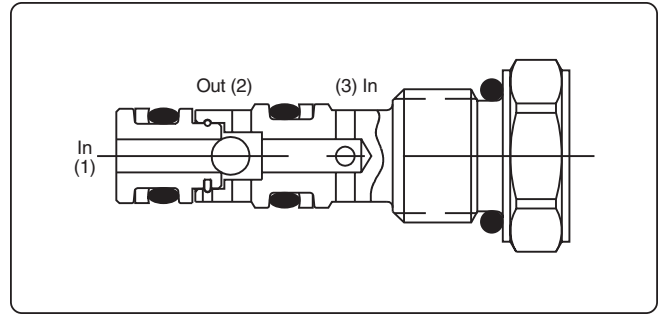
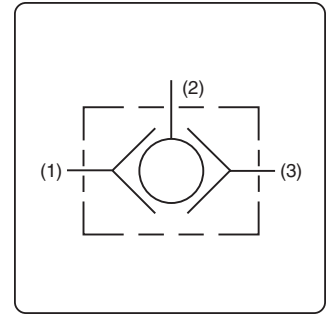
Performance Curve

Pressure Drop vs. Flow (Through cartridge only)

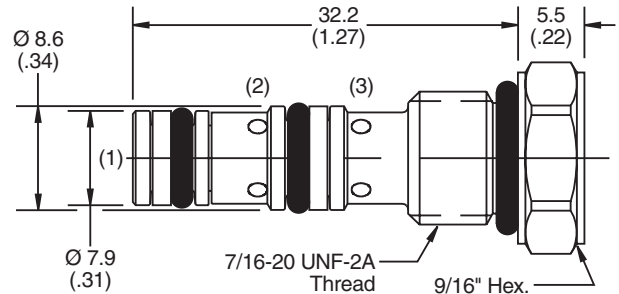


Specifications

Maximum Flow	3.8 LPM (1 GPM)
Maximum Inlet Pressure	207 Bar (3000 PSI)
Leakage at 150 SSU (32 cSt)	5 drops/min. (.33 cc/min.) at 207 Bar (3000 PSI)
Cartridge Material	All parts steel. All operating parts hardened steel.
Operating Temp. Range (Ambient)	-40°C to +93.3°C (Nitrile) (-40°F to +200°F) -31.7°C to +121.1°C (Fluorocarbon) (-25°F to +250°F)
Filtration	ISO code 16/13, SAE Class 4 or better
Fluids	Mineral-based or synthetic with lubricating properties at viscosities of 45 to 2000 SSU (6 to 420 cSt)
Approx. Weight	.02 kg (.04 lbs.)
Cavity	C04-3
Form Tool	Rougher NFT04-3R Finisher NFT04-3F



Dimensions



Ordering Information

CS041B	<input type="checkbox"/>	<input type="checkbox"/>		
04 Size Shuttle Valve	Seals	Port Size		
Code	Seals / Kit No.	Code	Port Size	Body Part No.
Omit	Nitrile / (SK04-3)	Omit	Cartridge Only	
V	Fluorocarbon / (SK04-3V)	A4T	SAE-4	(B04-3-A4T)

General Description

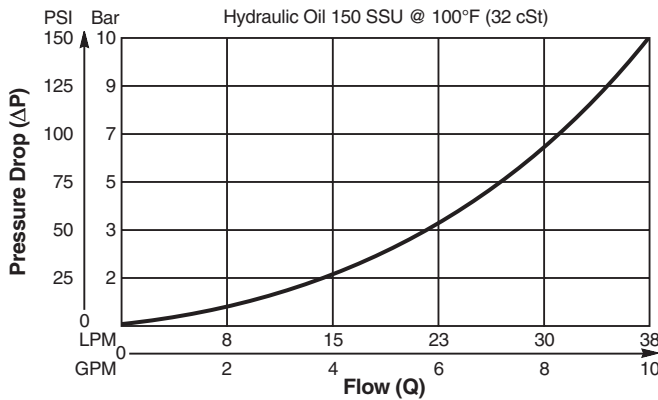
Cartridge Style Shuttle Valve. [For additional information see Technical Tips on pages CS1-CS4.](#)

Features

- Hardened, precision ground parts for durability
- 5000 PSI rated

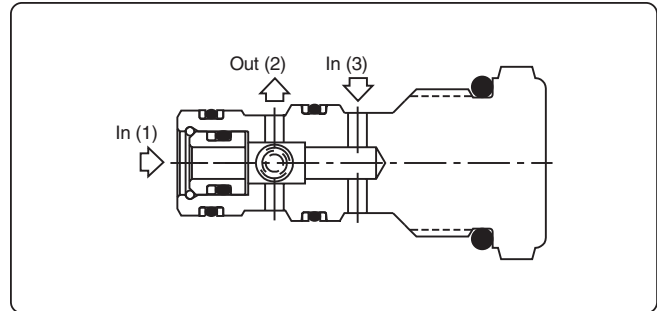
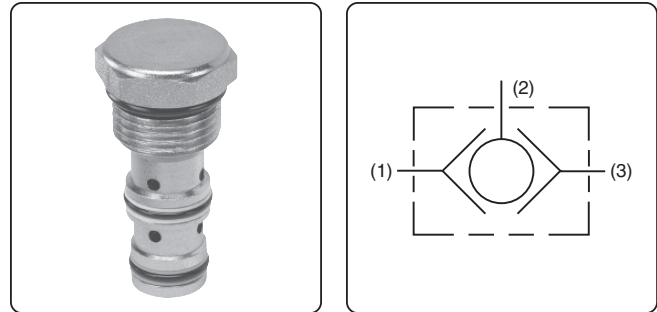
Performance Curve

Pressure Drop vs. Flow (Through cartridge only)

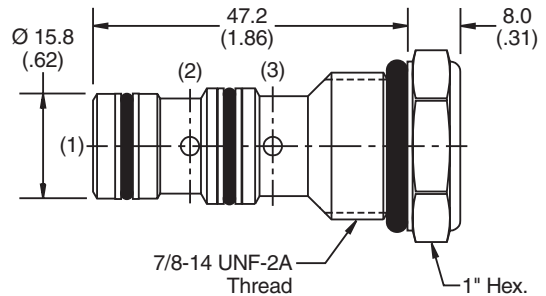


Specifications

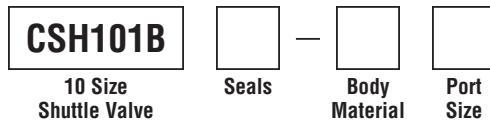
Maximum Flow	3.75 LPM (10 GPM)
Maximum Inlet Pressure	350 Bar (5000 PSI)
Leakage at 150 SSU (32 cSt)	10 drops/min. (.67 cc/min.) at 350 Bar (5000 PSI)
Cartridge Material	All parts steel. All operating parts hardened steel.
Operating Temp. Range (Ambient)	-40°C to +93.3°C (Nitrile) (-40°F to +200°F) -31.7°C to +121.1°C (Fluorocarbon) (-25°F to +250°F)
Filtration	ISO code 16/13, SAE Class 4 or better
Fluids	Mineral-based or synthetic with lubricating properties at viscosities of 45 to 2000 SSU (6 to 420 cSt)
Approx. Weight	.14 kg (0.3 lbs.)
Cavity	C10-3
Form Tool	Rougher NFT10-3R Finisher NFT10-3F



Dimensions



Ordering Information



Code	Seals / Kit No.
Omit	Nitrile / (SK10-3N)
V	Fluorocarbon / (SK10-3V)

Code	Body Material
Omit	Steel
A	Aluminum

Code	Port Size	Body Part No.
Omit	Cartridge Only	
4P	1/4" NPTF	(B10-3-*4P)
6P	3/8" NPTF	(B10-3-*6P)
8P	1/2" NPTF	(B10-3-*8P)
6T	SAE-6	(B10-3-*6T)
8T	SAE-8	(B10-3-*8T)
6B	3/8" BSPG	(B10-3-6B)†
8B	1/2" BSPG	(B10-3-*8B)

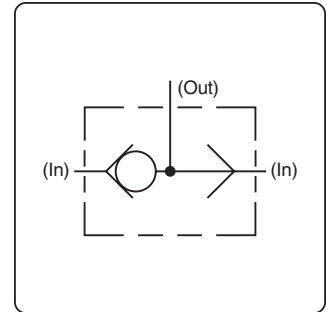
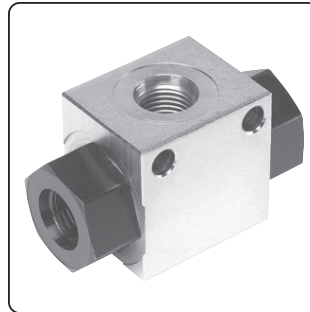
* Add "A" for aluminum, omit for steel.
 † Steel body only.

General Description

In-Line Style Shuttle Valve. [For additional information see Technical Tips on pages CS1-CS4.](#)

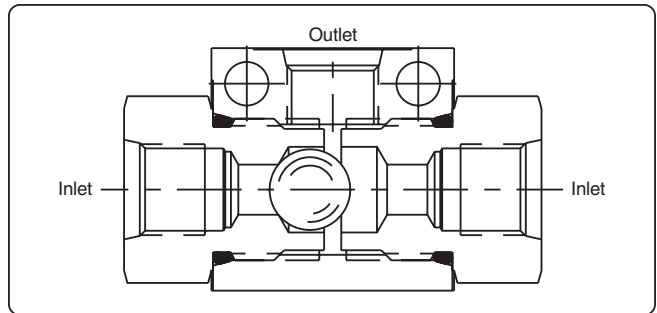
Features

- Compact in size
- In-line mounting
- Easily adaptable to various applications



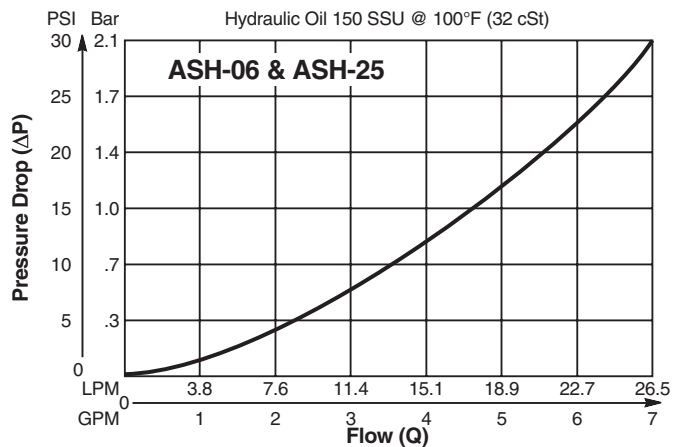
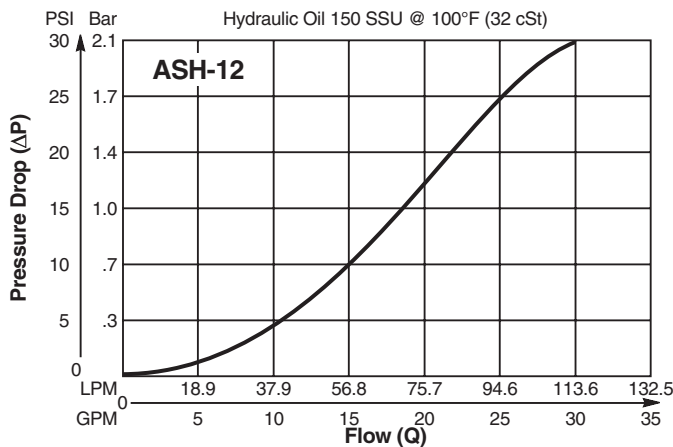
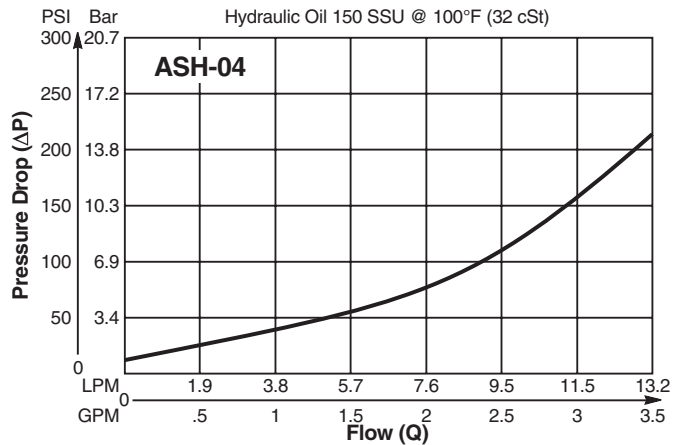
Specifications

Inlet Flow	ASH-04-3 11.3 LPM (3 GPM) ASH-06-2 22.5 LPM (6 GPM) ASH-25-1 22.5 LPM (6 GPM) ASH-12-2 112.5 LPM (30 GPM)
Maximum Inlet Pressure	207 Bar (3000 PSI)
Leakage at 150 SSU (32 cSt)	5 drops/min. (.33 cc/min.) at 172 Bar (2500 PSI)
Operating Temp. Range (Ambient)	-40°C to +93.3°C (-40°F to +200°F) (Nitrile Seals Only)
Body Material	ASH-04-3 Steel (Chromate Plated) ASH-06-2 Steel (Chromate Plated) ASH-25-1 Steel (Chromate Plated) ASH-12-2 Aluminum (Anodized)
Filtration	ISO code 16/13, SAE Class 4 or better
Fluids	Mineral-based or synthetic with lubricating properties at viscosities of 45 to 2000 SSU (6 to 420 cSt)
Approx. Weight	ASH-04-3 .36 kg (0.8 lbs.) ASH-06-2 .45 kg (1.0 lbs.) ASH-25-1 .45 kg (1.0 lbs.) ASH-12-2 .90 kg (2.0 lbs.)



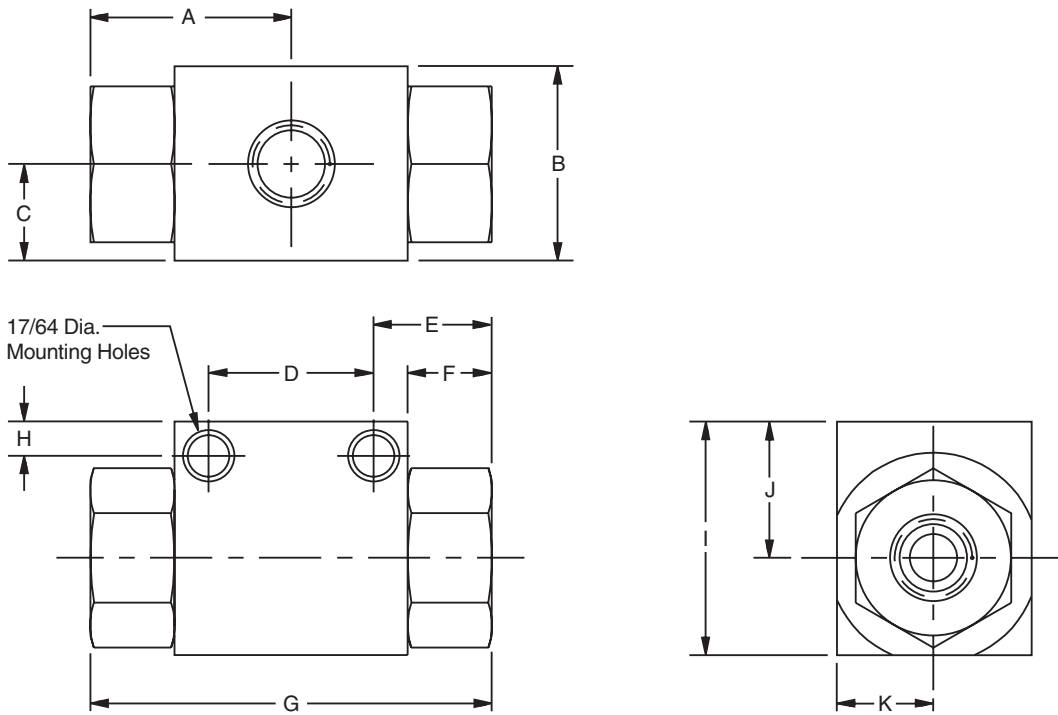
Performance Curves

Flow vs. Pressure Drop
(Through cartridge only)

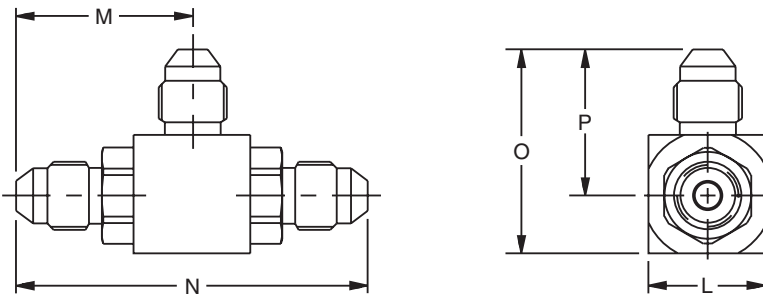


ash-04.pm6.5, bl, 6/04

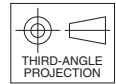
Dimensions Millimeters (Inches)



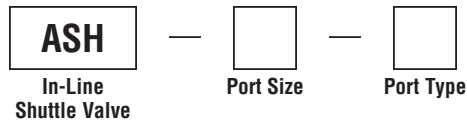
Model	A	B	C	D	E	F	G	H	I	J	K
ASH-06-2	32.8	31.8	15.7	26.9	19.3	13.7	65.5	5.6	38.1	22.2	15.7
ASH-25-1	(1.29)	(1.25)	(.62)	(1.06)	(.76)	(.54)	(2.58)	(.22)	(1.50)	(.88)	(.62)
ASH-12-2	46.2	47.8	25.4	N/A	N/A	22.4	95.0	N/A	63.5	39.1	23.9
	(1.82)	(1.88)	(1.00)			(.88)	(3.74)		(2.50)	(1.54)	(.94)



Model	L	M	N	O	P
ASH-04-3	19.1	28.8	57.4	33.3	23.9
	(.75)	(1.14)	(2.26)	(1.31)	(.94)



Ordering Information



Code	Port Size
04	1/4" JIC
06	SAE-6
12	SAE-12
25	1/4" NPTF

Code	Port Type
1	NPTF
2	SAE (#6 & #12)
3	Male JIC (1/4" only)